

# BERT | FRANK

## ARBOR PENDANT

### MAINTENANCE

- Lacquered brass should be wiped with a soft duster.
- Do not clean with any liquid, chemical or abrasive cleaners.
- All electrical work must be conducted by a qualified electrician.

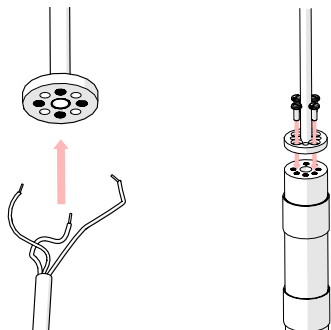
### TECHNICAL

- UK/EU Non-Dimming - 1 x 13W T5 TUBE w WARM GEL
- UK/EU Dimming - 1 x 300mm 4W E27 LED BULB
- US - 1 x 300mm 4W E26 LED BULB

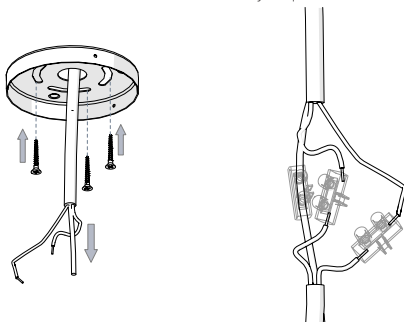
www.berfrank.co.uk  
+44 (0)207 164 6482

### INSTRUCTION

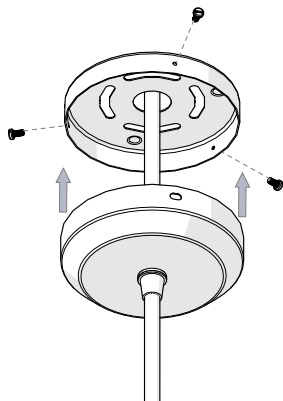
- 1
- Feed electrical flex up through drop rod and out ceiling rose
  - Screw the drop rod to top of shade assembly.
  - Using 4x screws provided, secure to the main shade rod.



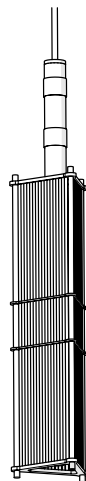
- 2
- Consider position of pendant, feed mains power through ceiling hole and ceiling rose mounting plate.
  - Fix mounting plate to ceiling using suitable fixings.
  - Make electrical connection between mains power and fixture.
  - Electrical work must be conducted by a qualified electrician.



- 3
- Secure ceiling rose cover to mounting plate using 3x screws on side of cover.

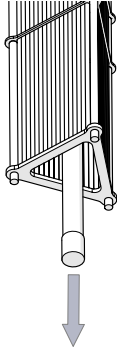


4

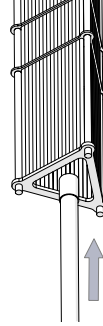


# GLOBE REPLACEMENT INSTRUCTION

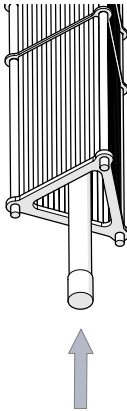
- 1 - Remove end cap for T5 bulb



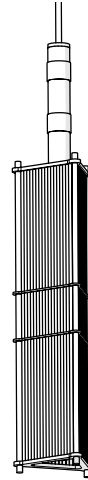
- 2 - For UK/EU, replace with new 13W T5 bulb.  
- For UK/EU, replace with new 13W E27 bulb.  
- For US, replace with new 13W E26 bulb.  
- Ensure bulb is dimming capable if required.



- 3 - Replace end cap for T5 bulbs



4



This product is only suitable for connection to the native power supply to which the unit was specifically manufactured. It is for indoor use only, and not suitable for a bathroom location.

If the Class II, double insulated symbol is on the lamp, it does not require an Earth, and Live or Neutral must not be connected to Earth. If there is no such symbol, then the lamp must be Earthed.

Under no circumstances must this lamp be covered with any material as this could pose a safety hazard. It must be used on a stable, flat surface.

Never fit bulbs of a higher wattage than those specified on the label, as these may cause overheating and damage the fitting. If the mains cable becomes damaged it must only be replaced by a technically competent, qualified person.

Allow 10 minutes to cool before replacing, adjusting or cleaning. Clean with specified cleaners only. Do not use other liquid, chemical or abrasive cleaners on this product.

If you are in any doubt about your competence please consult a qualified electrician. If any modification is made it will invalidate the warranty and may render the product unsafe.